

PART OF THE SE.1/4, OF THE SE.1/4, OF SEC. 27, T.6N., R.1W., S.L.B. & M.

128

NOB HILL ANNEX

BLOCKS 55 & 56

S 89°02' E

TAXING UNIT: 25

SEE PAGE 129

IN OGDEN CITY

SCALE 1" = 50'

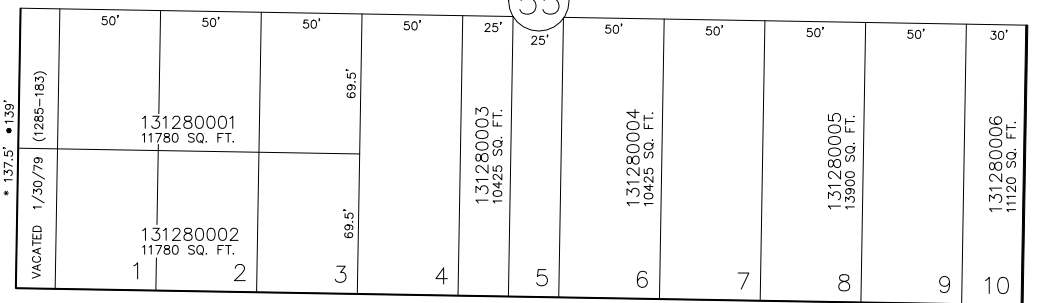
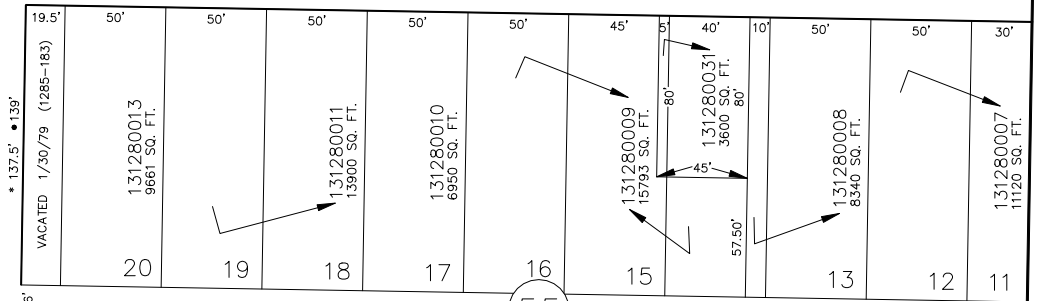
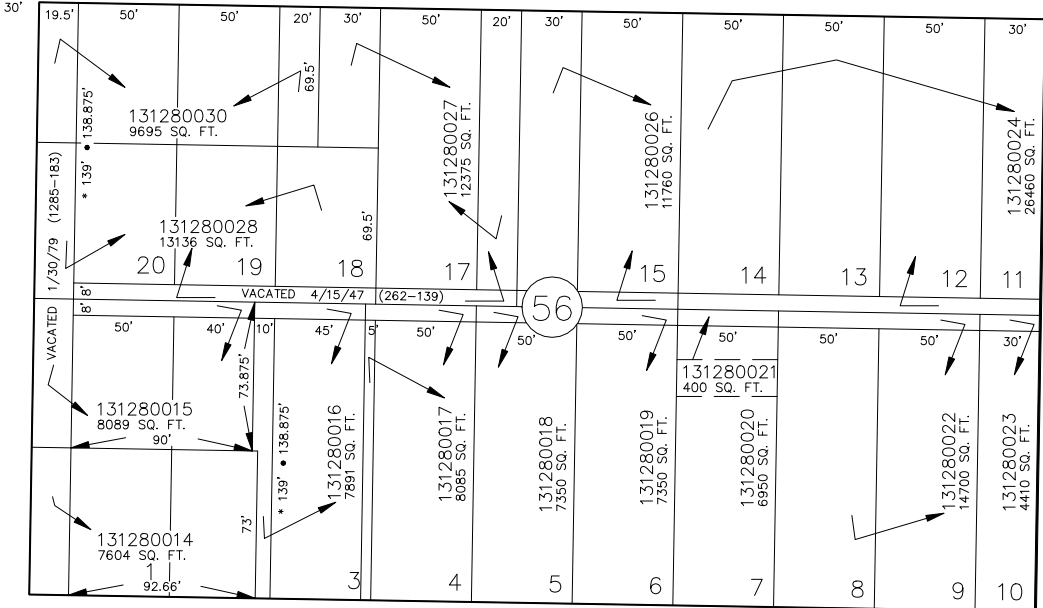
CAPITOL STREET

PIERCE AVENUE

N 0°58' E

25TH STREET

S 89°02' E



• OGDEN CITY ENG. DEPT. PLATS
• ORIG. DED. PLAT

FOR COMPLETE ENG DATA SEE
ORIGINAL DEDICATION PLAT IN
BOOK 6, PAGE 2 OF RECORDS.

S 89°02' E

LAKE STREET

SEE BOOK 14, PAGE 77

JPS 4-94

SEE PAGE 126

SEE PAGE 127